

The Irwin/Baldwin Family

When one looks at the people who once owned land in Terrace Park, it becomes obvious that one of those families was the Irwin/Baldwin family. William T. Irwin went to Scotland in 1898 and brought back the game of golf to Terrace Park, but where did he live in Terrace Park? Actually it seems he never did live in Terrace Park but obviously was closely related with it and owned a lot of land, as did his daughter Anna Louise Baldwin. During the summer months he and his family lived in a large and impressive summer home just across the Little Miami River from Terrace Park.

Land in Milford that later became Sem Villa was once a popular picnic area locally referred to as "Gatch Grove." John Kugler bought some of that land to farm. According to the Greater Milford Area Historical Society's book entitled *Bridge to the Past. A History of Milford, Ohio*,

"Mr. William Taylor Irwin, a stockbroker from Cincinnati, and his wife, Mary Louise Orr, purchased eighty-eight acres of this land for a summer home in 1895. The house and surrounding buildings were built from rocks carried from the river. By fall the house, resembling a hunting lodge, was finished. Other buildings such as a barn, greenhouse, milkhouse with a windmill on top, and an icehouse were also built with stone. Later, a swimming pool was built on the site of Kugler's maple sugar refinery. The home came to be known as 'Rock House Lodge' and the estate was called 'Ripples' because of the way the water flowed swiftly over the rock bed of the Little Miami River."

The 1900 Census finds 36-year-old William Irwin, a stockbroker at Irwin & Ballwyn living on Fourth Street across from Lytle Park in downtown Cincinnati with his 36-year-old wife, Louisa, and her parents, 58-year-old Annie and 58-year-old George D. Orr, a physician and head of the household. The family also included the Irwin's two daughters, Anna Louise and Janet, Louisa Irwin's sister, Henrietta Orr, and two servants. In 1910 the family remained on Fourth Street but without Henrietta Orr and with four servants. In 1920 the Orrs still had Will and Louisa Irwin living with them and their granddaughter Anna. By then she was married to Francis Baldwin and had two children, William and Mary Louise, all living with the Orrs and four servants, a cook, waitress, maid and nurse. Thus the family lived in downtown Cincinnati during the winter but moved to their summer home in Milford during the summer.

What the Irwins did own in Terrace Park was a lot of land. According to an affidavit their daughter Anna Louise Baldwin inherited 143 lots in 1925 when she was living on Mound Street in Milford. Most of the land is in J. W. Sibley subdivisions, but some in Stuntz and Biggs subdivisions. Her sister, Janet died in 1912, her mother in 1922 and her father on the 9th of September 1925. There are memorial windows to Mary Louise Irwin and Janet Churchill Irwin at St. Thomas Church. The 1930 Census finds Anna Baldwin living on Mill Street in Milford with no mention of a husband (they were divorced on July 9, 1935) but with her children: 14-year-old William, 12-year-old Mary Louise and 10-year-old Francis George. They had just two servants but one is Katherine Fitzgerald who was with her grandparents at least by 1910.

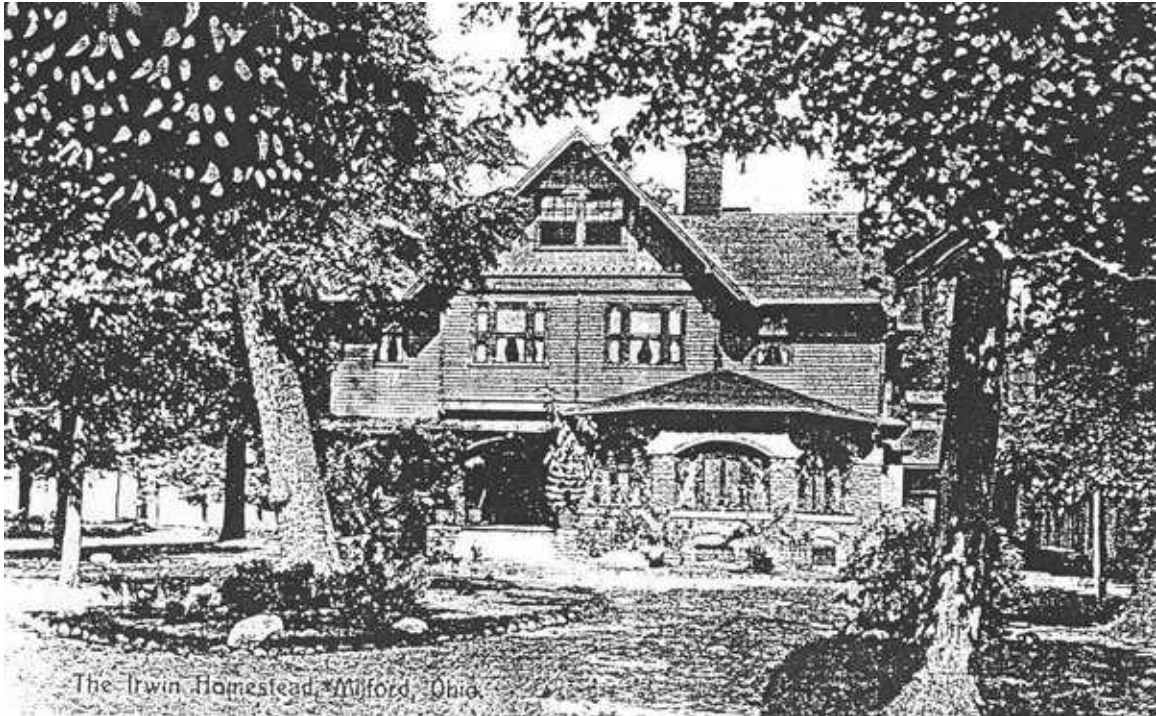
According to Helen Barnett, Mrs. Baldwin moved from Milford to 219 Oxford Avenue, next door to Helen, with her three children, Bill, Mary Louise and Francis George. She must have rented since there's no mention in deeds of her owning this

home. While living on Oxford Avenue she sold several of the Terrace Park lots. Helen was told this was to finance Mary Louise's coming out party at the Community House. We don't know when or why the Baldwin family moved from Terrace Park.

Francis George Baldwin, an American Air Force bomber pilot, was the first person killed from this area in World War II. According to an undated newspaper article, "He was killed on December 9, 1944, at the age of 24, near Oliveta Citra, southern Italy, when a plane in which he was a passenger crashed into a mountain during a heavy storm." The Terrace Park American Legion was named for him. His brother, William, a U. S. Marine who served in the Pacific during World War II, was a founding member.



Band entertainment at the Irwin's Rock House Lodge



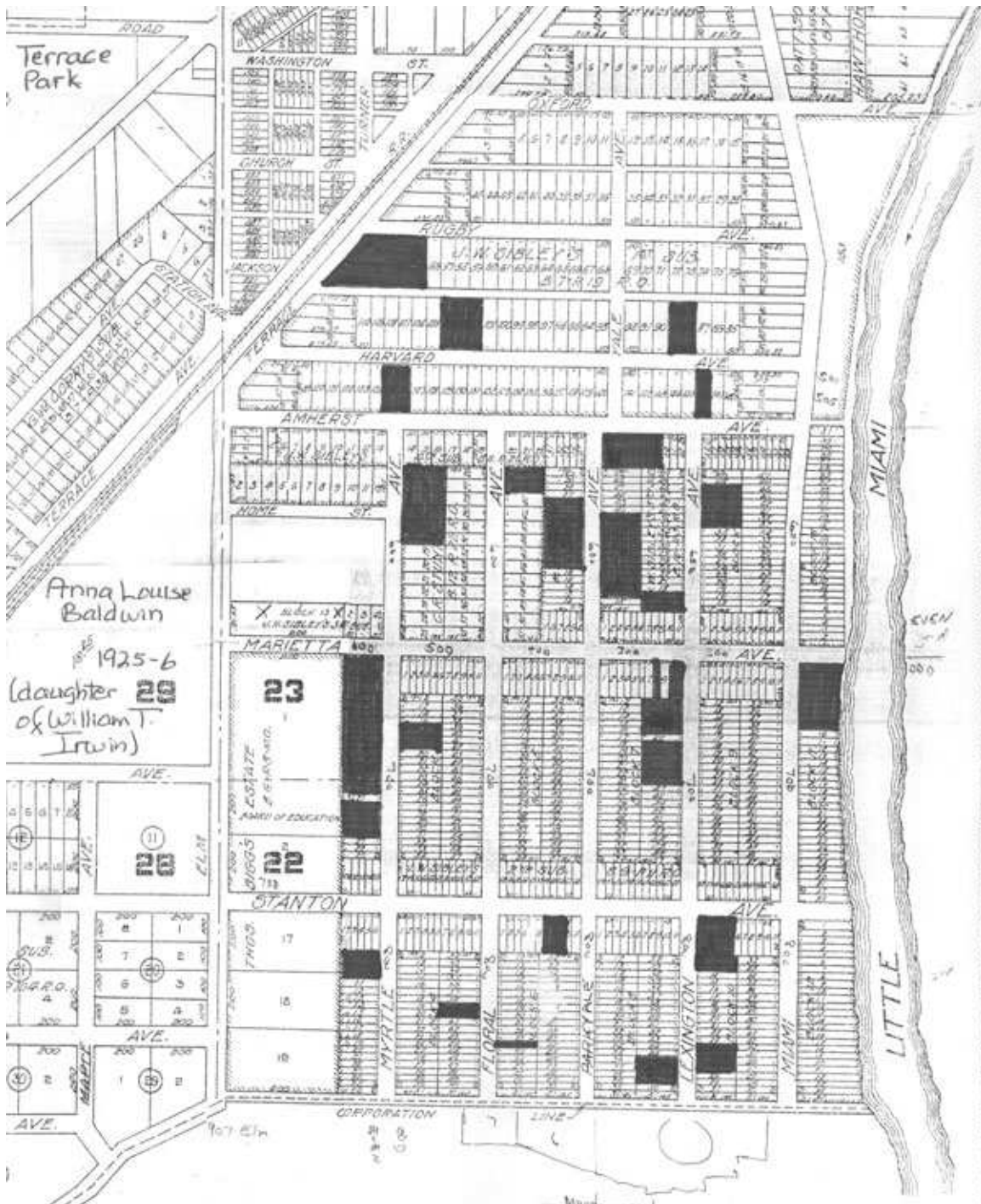
Rock House Lodge, Milford Ohio



Left front of Rock House Lodge – 2009



219 Oxford Avenue in 1912



Lots owned by Anna Louise Baldwin in Terrace Park, 1925