

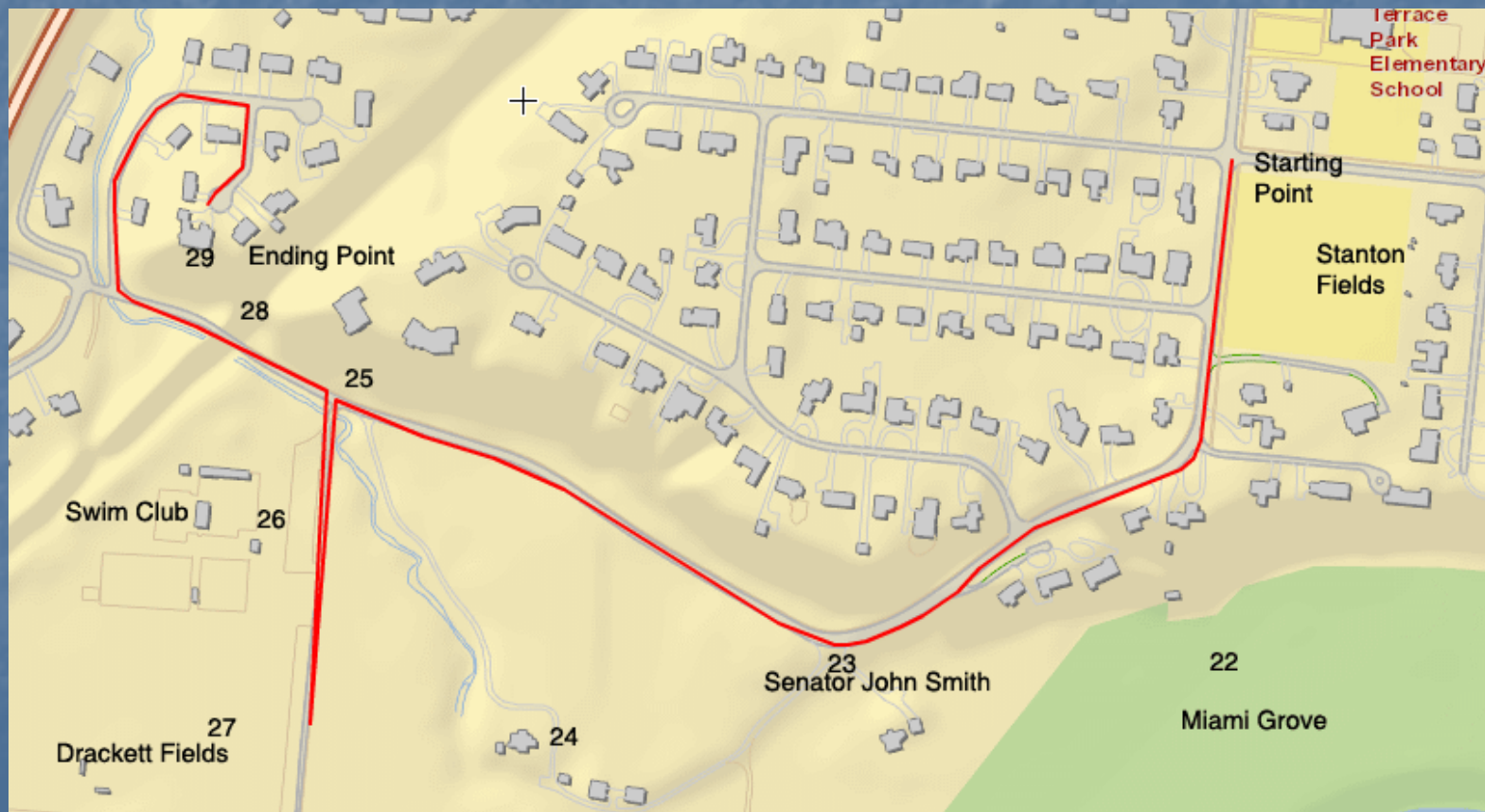
Terrace Park Walking Tour

Section 3

Lower Elm Avenue

Tour Map – Section 3

- Start at Stanton Fields



Miami Grove Nature Preserve



- On the left of Elm is the Miami Grove Nature Preserve, once home to many summer cottages and residents.
- Trails lead to the river where many still walk their dogs.

Senator John Smith

- Just past the entrance to the Nature Preserve is this marker, commemorating Terrace Park's first resident, ca 1800, an associate of Aaron Burr who visited in May 1805 and September 1806.



John Smith Homestead

- The Lindells maintain horses on this land.
- The farm house still retains the original log cabin beneath a more modern exterior. It's the oldest house in Terrace Park.



Turn left into Stumps Lane



Terrace Park Swim Club

- Just down Stumps Lane is the Swim Club with tennis courts.



Drackett Field



- Follow down Stumps Lane past the Swim Club and you come to Drackett Field where many teams perform.
- Stumps clubhouse is further down the lane.

T. P. Entrance Tunnel

- Back on Elm Avenue is the T. P. tunnel. Over it went the Little Miami Railroad (later the Pennsylvania Railroad) and now a modern bike trail.
- It was probably built about 1853



Robinson Circus House

- After passing through the tunnel, turn right on Robinwood Drive. Follow it to Circus Place. The large house at the end, built 1855, was the home of the circus owner, John Robinson. In this area he wintered many circus animals.



Conclusion

- This concludes our tour of section 3. Now proceed to section 4.